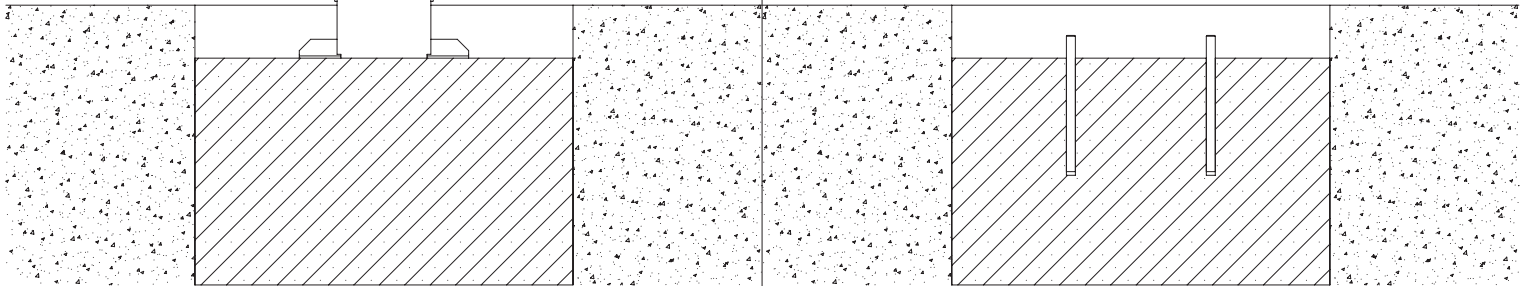
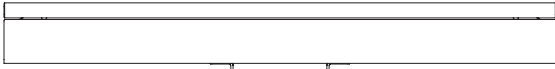


Oxley Picnic Set

1



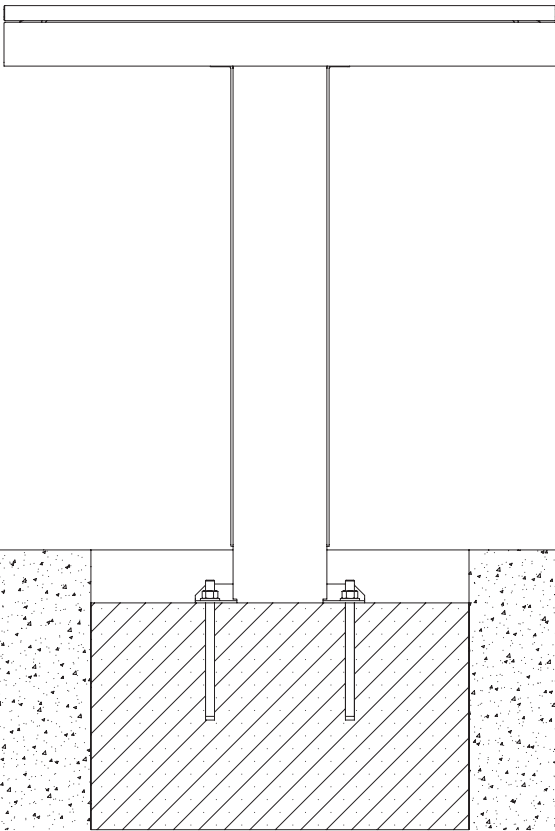
2

- Position bench/table
- Mark hole centres through mounting holes

- Use hammer drill with 12mm masonry bit to drill marked holes minimum depth 155mm
- Clear holes with wire brush or compressed air
- Fill holes with chemset epoxy
- Insert M12 x 180mm threaded anchor bolt into each hole. Ensure between 25mm and 30mm of each anchor bolt protrudes above mounting surface
- Allow chemset epoxy to set according to manufacturer's instructions

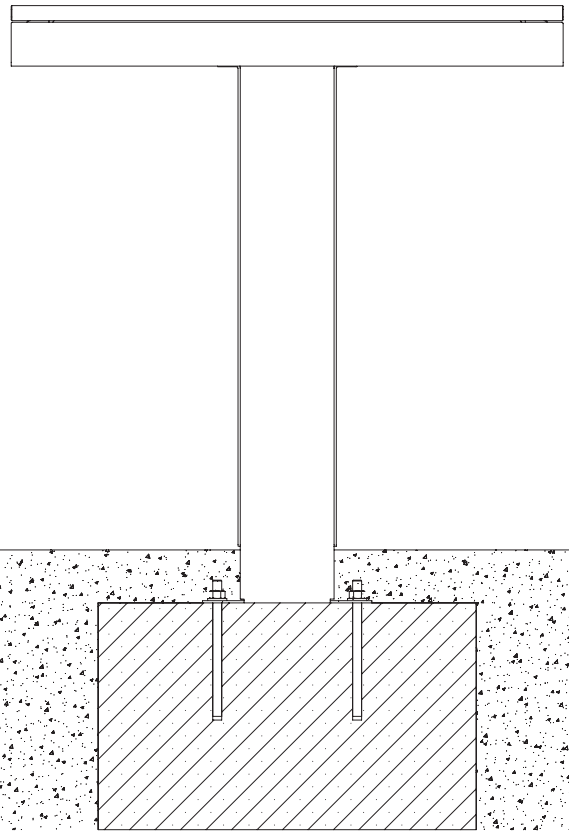
Oxley Picnic Set

3



- Place bench/table onto anchor bolts
- Thread 1x M12 washer and 1x M12 nylock nut onto each anchor bolt
- Use socket wrench to tighten M12 nylock nuts securely onto each anchor bolt

4

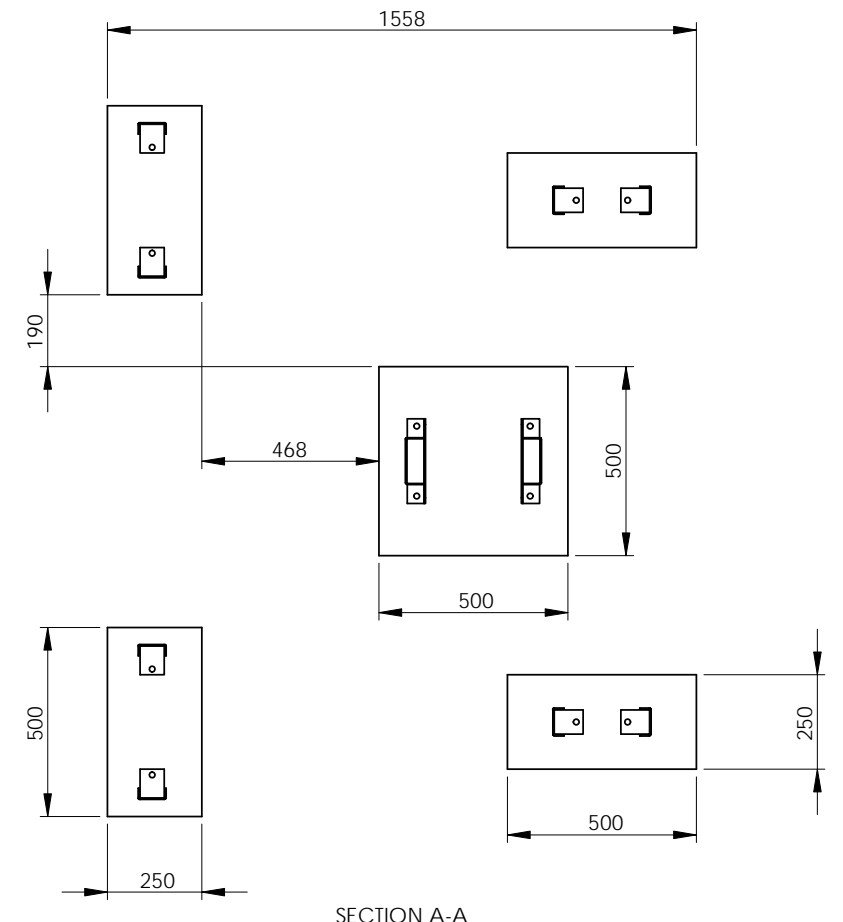


- Backfill or pave to FGL

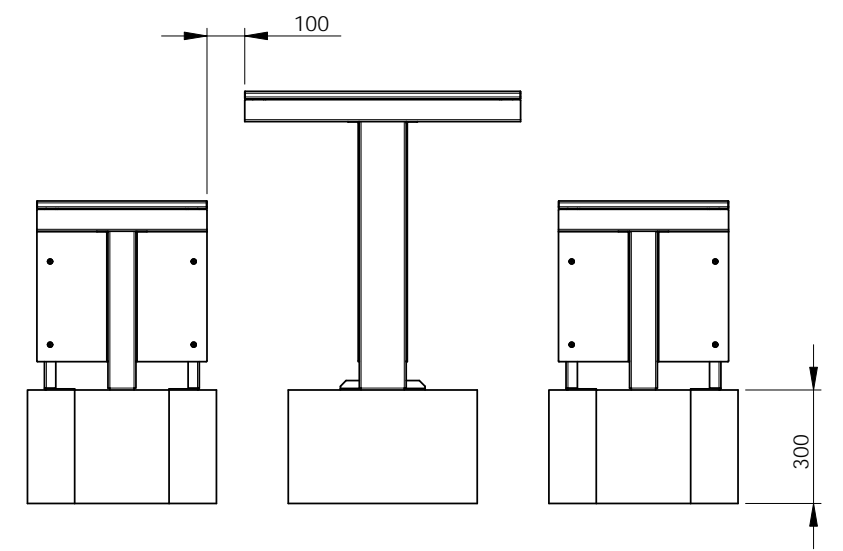
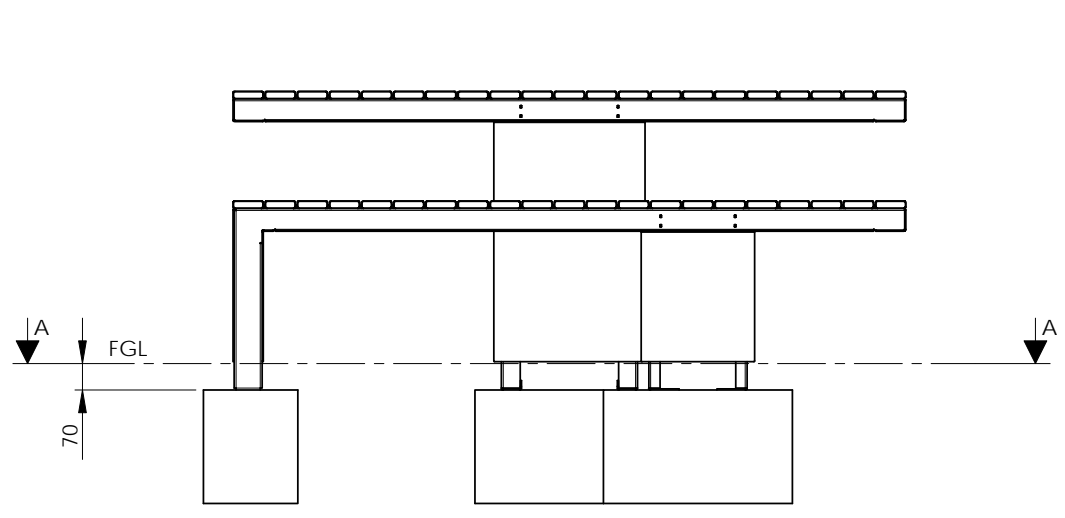
Note:

- All tools and installation fixings to be supplied by contractor
- Footing to be set with mounting surface at 70mm below FGL
- Footing design to be determined by site engineer based on local conditions
- Refer to footing drawing for recommended minimum footing sizes and layout.

ISSUE	DESCRIPTION	DRAWN	DATE
A	Initial Release	TW	03/03/2017



SECTION A-A



- GENERAL NOTES:
- All dimensions in millimetres unless otherwise shown.
 - Linear Tolerances:
x ± 1.0
x.x ± 0.5
x.xx ± 0.1
Angular Tolerances:
±0.5°
 - No deviation from drawing will be accepted without prior written approval.
 - Do not scale from drawings. Use dimensions provided if this is insufficient or ambiguous contact Mos for clarification.

Title:
Footing
Product:
Oxley Picnic Set

Dwg No: 1026-802 Project No: 1026 Date Drawn: 03/03/2017 Scale: 1:20 Sheet: A3



Part Location:
Part Name:
Oxley Picnic Set Footing

